

MONTHLY MEMBERSHIP PROGRESS REPORT

LOCATION INDIA

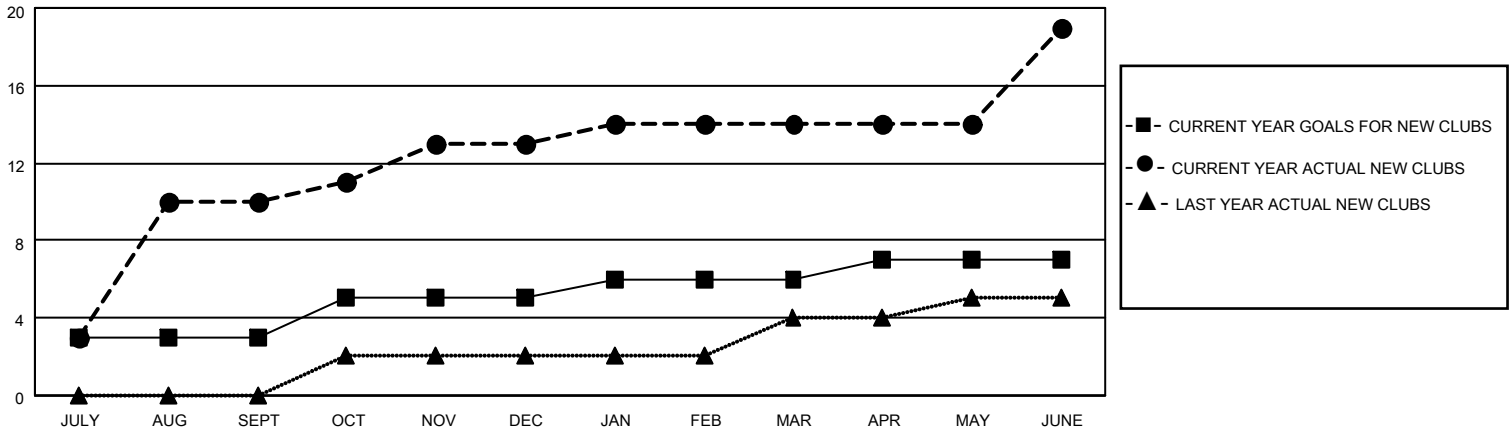
District 320 E

Results as of: 6/30/2023

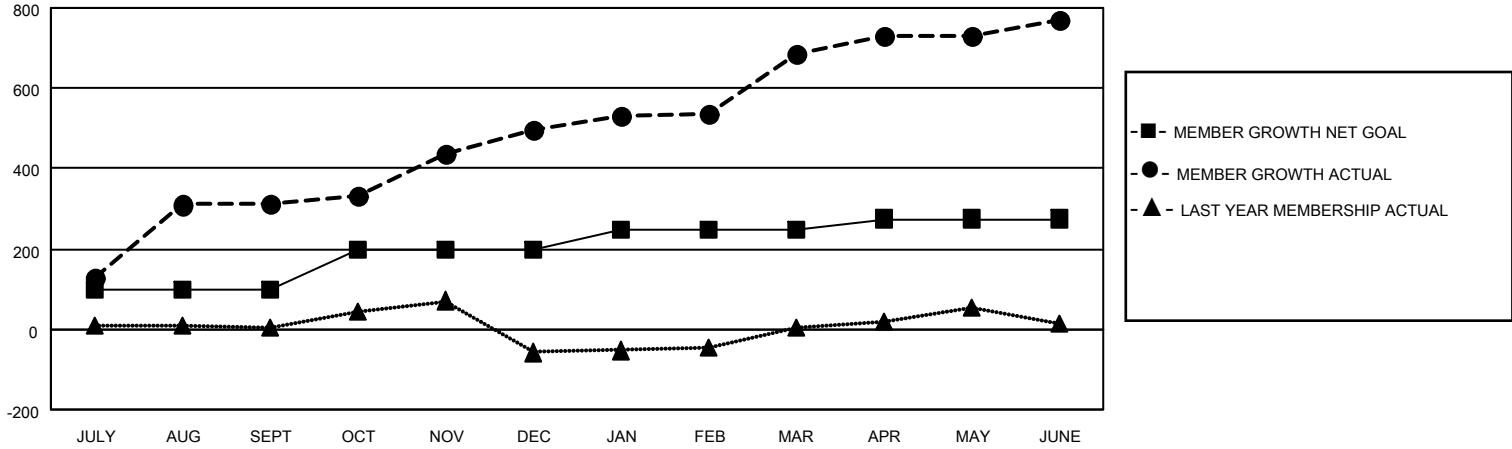
Clubs			
RESULTS FOR 2022-2023			
QUARTER	NEW CLUB GOAL	NEW CLUBS	DROPPED CLUBS
JULY/AUG/SEPT	3	10	0
OCT/NOV/DEC	2	3	1
JAN/FEB/MAR	1	1	1
APR/MAY/JUNE	1	5	3

Members			
RESULTS FOR 2022-2023			
QUARTER	MEMBER GROWTH NET GOAL	MEMBER GROWTH ACTUAL	DROPPED MEMBERS ACTUAL (including transfers)
JULY/AUG/SEPT	100	363	48
OCT/NOV/DEC	100	335	140
JAN/FEB/MAR	50	191	3
APR/MAY/JUNE	25	333	231

GOALS AND ACTUAL NEW CLUBS CUMULATIVE



GOALS AND ACTUAL MEMBERS CUMULATIVE



DROPPED CLUBS: 5

72 CLUBS OF 80 ADDED 1 OR MORE NEW MEMBERS

GENDER DISTRIBUTION

DROPPED MEMBERS

DECEASED	16
CLUB CANCELLED	45
OTHER	361
TOTAL	422

[CLICK HERE FOR CUMULATIVE MEMBERSHIP DATA](#)

MALE	2,551 (67.18%)
FEMALE	1,245 (32.79%)
NON BINARY	0 (0.00%)
PREFER NOT TO ANSWER	1 (0.03%)

TOTAL FAMILY UNIT MEMBERS 2,781

FAMILY MEMBERS PAYING HALF DUES 1,660